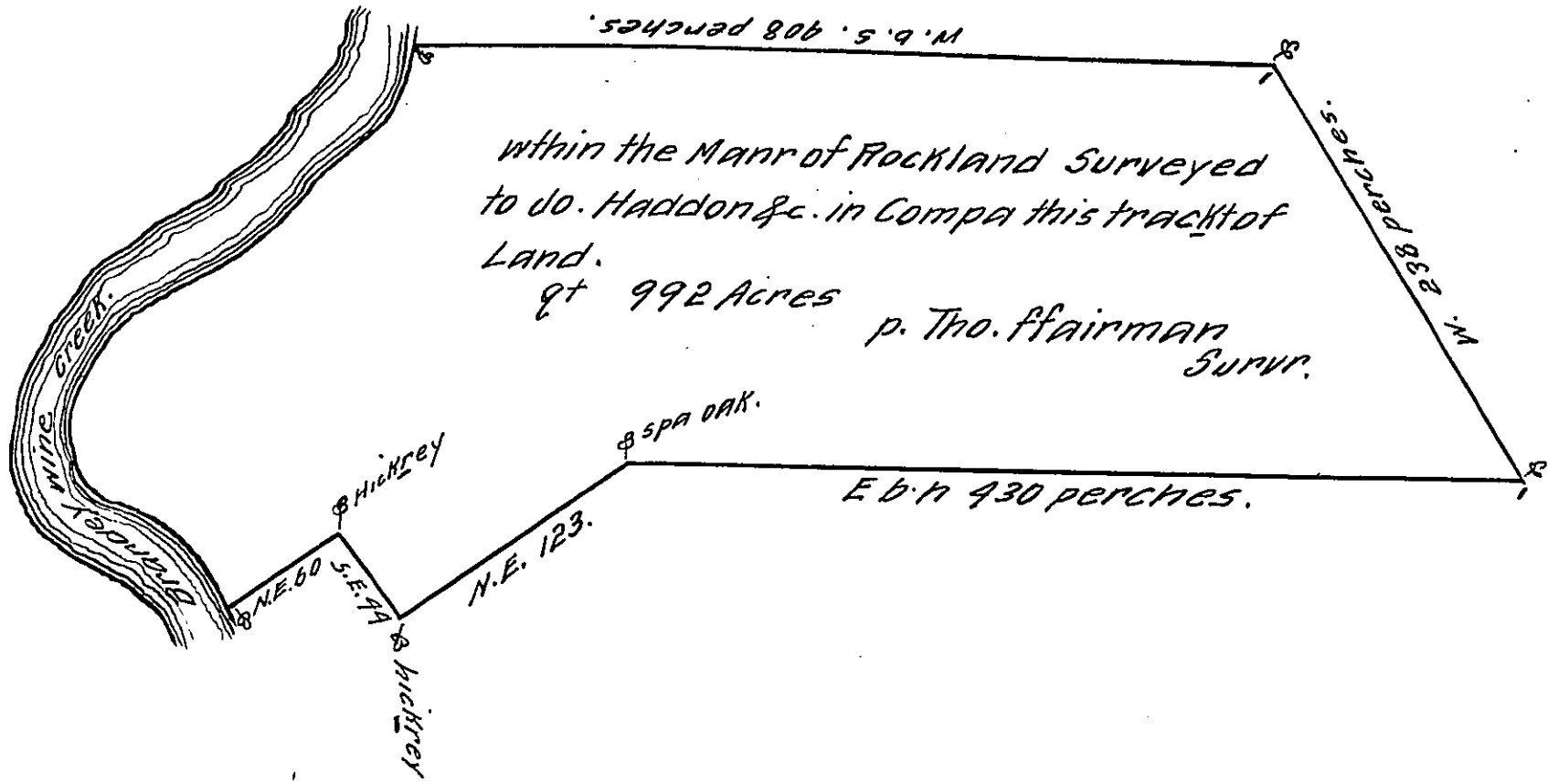


See the other Draught of this Tract.



within the Manr of Rockland Surveyed  
to Jo. Haddon &c. in Compa this tract of  
Land.  
qt 992 Acres p. Tho. Fairman  
Survr.

In Rocklands 992 and 309.  
Land.

IN TESTIMONY that the above is a copy of the original remaining on file in the Department of Internal Affairs of Pennsylvania, made conformably to an Act of Assembly approved the 16th day of February, 1833, I have hereunto set my Hand and caused the Seal of said Department to be affixed at Harrisburg, this twenty second day of December, 1910.

*Henry A. Couch*  
Secretary of Internal Affairs.